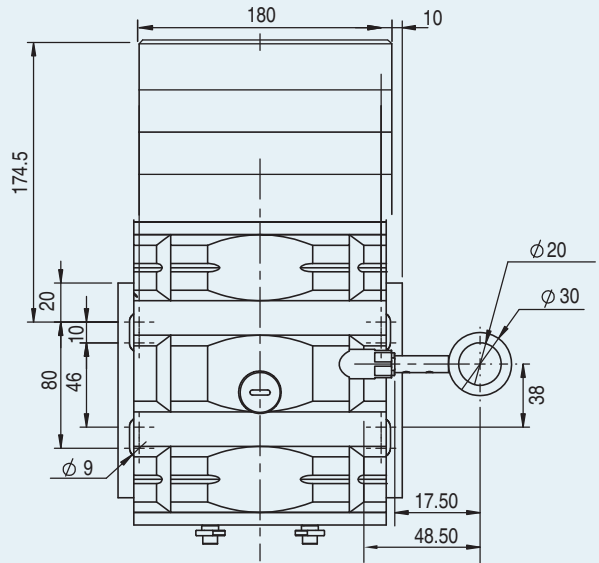
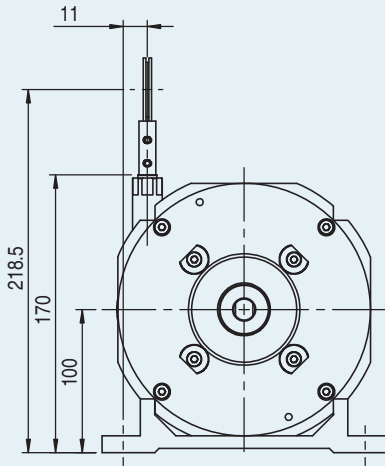


Oldham coupling to drive the encoder that will be mounted



CONNECTIONS FOR INCREMENTAL ENCODERS

Function	Cable Colour Code	12 Pin Connector
0 Volt	white	1
+ Volt	brown	2
A	green	3
B	yellow	4
Z	grey	5
\bar{A}	pink	6
\bar{B}	blue	7
\bar{Z}	red	8

CONNECTIONS FOR SSI ABSOLUTE ENCODERS

Function	Cable Color Code	12 Pin Connector
GND	WHITE	1
+ Vcc	BROWN	2
SSI Clock +	GREEN	3
SSI Clock -	YELLOW	4
SSI Data +	GREY	5
SSI Data -	PINK	6
Reset/Preset	BLUE	7
Direction Setting	RED	8