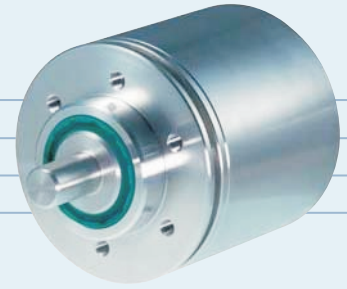


# AP700

WASHDOWN PROOF  
SSI SINGLE-TURN  
ABSOLUTE ENCODER

Heavy Duty Construction  
Stainless Steel Housing  
IP66/67  
Up to 14 Bit SSI  
10 Vdc to 30 Supply Voltage



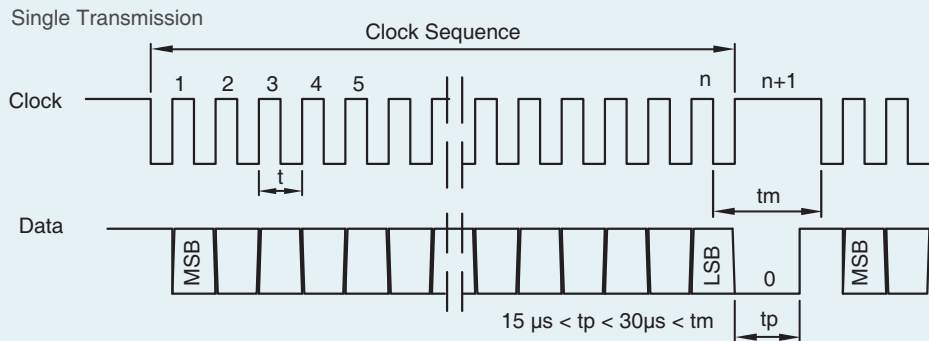
## ELECTRICAL SPECIFICATIONS

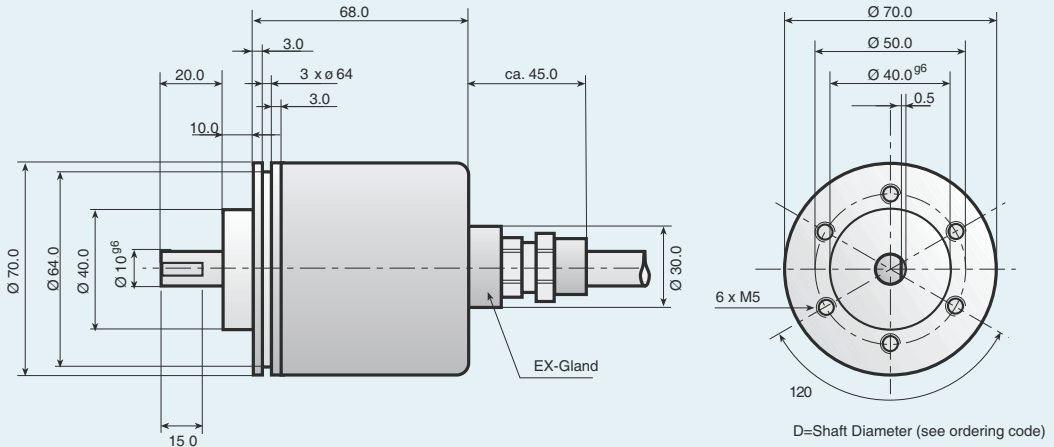
Supply Voltage	10 to 30 Vdc
Current Consumption(no load)	80 mA @ 27 Vdc
Output Circuit	RS485/RS422 Compatible
Clock Frequency	up to 500 kHz (standard)
Direction Setting	GND (cw) or +Vcc (ccw)
Reset/Preset Setting	+Vdc for 2 seconds
Resolution	14 Bits

## MECHANICAL SPECIFICATIONS

Cover	Stainless Steel
Bearing Housing	Stainless Steel
Shaft	Stainless Steel
Maximum RPM	6000 RPM (max)
Torque	> 0.4 Nm
Shaft Loading	Axial 60 N, Radial 50 N
Environmental Protection	IP66/67
Operating Temperature	-20°C to +70°C
Weight	1300 g (2.866 lbs)

## SSI TRANSMISSION PROTOCOL





**ORDERING CODE**

**AP 700** -         -    
 a b c d e f g h Resolution (Bits)

- |  |   |
|--|---|
| <b>a Group Function</b><br>AP=Absolute Encoder | <b>e Connection Type</b><br>0=2 m (6') Cable            |
| <b>b Basic Series Number</b><br>AP700          | <b>f Connection Location</b><br>A=Axial                 |
| <b>c Shaft Size</b><br>10=10 mm<br>12=12 mm    | <b>g Output Signals</b><br>J=Binary Code<br>Y=Gray Code |
| <b>d Mechanical Options</b><br>0=None          | <b>h Output Circuit Type</b><br>G=SSI 10 to 30 Vdc      |

Notes:  
 Special functions and designs will be designated by a 4 digit code at the end of the part number.  
 Serial format SSI signals are also available.  
 Consult factory for further details.

**CONNECTIONS**

Function	Cable Color Code
GND	WHITE
+ Vcc	BROWN
SSI Clock +	GREEN
SSI Clock -	YELLOW
SSI Data +	GREY
SSI Data -	PINK
Reset/Preset	BLUE
Direction Setting	RED