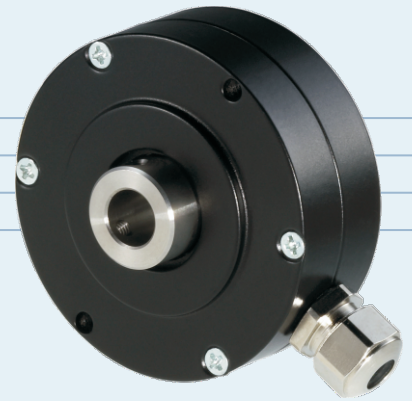




Compact Design
Shaft Mounted
3600 PPR Maximum
4.75 to 30 Volts, RS 422 Compatible
100 kHz Maximum Frequency



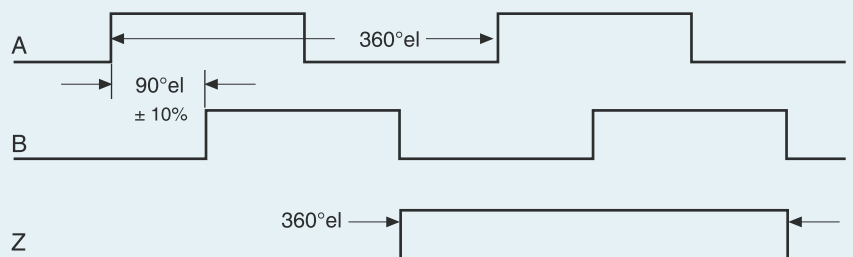
ELECTRICAL SPECIFICATIONS

Supply Voltage	4.75-30Vdc
Current Consumption	max. 40 mA
Output Circuit	Push-Pull, RS 422A
Impulse Frequency	300 kHz (max)
Signal Level (high)	Vcc - 0.7 Volt
Signal Level (low)	0.3 Volt (max)
Short Circuit Protection	100%

MECHANICAL SPECIFICATIONS

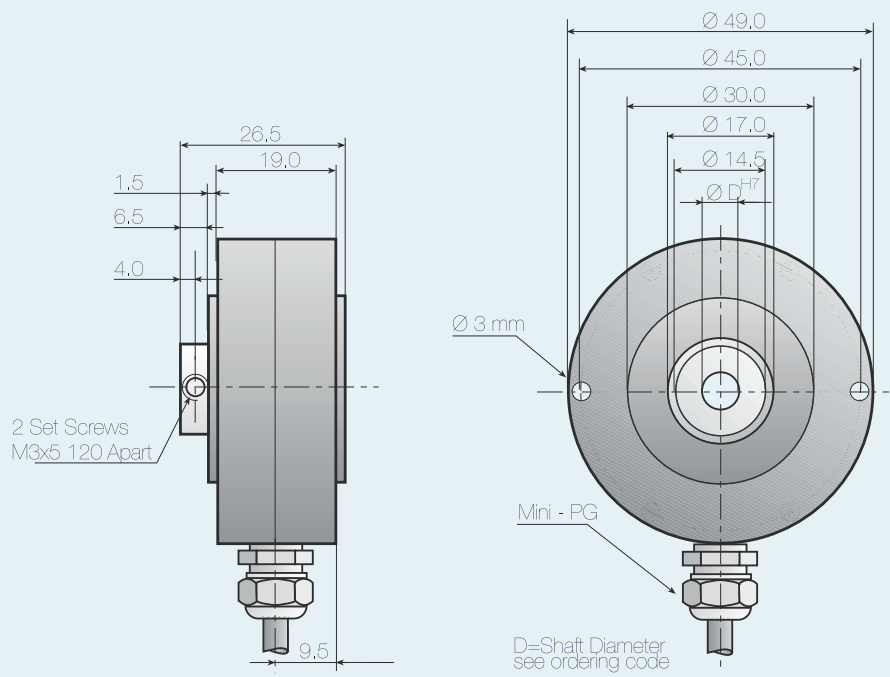
Cover	Aluminum
Body	Aluminum
Shaft	Stainless Steel
Speed	6000 RPM Max.
Torque	> 0.04 Nm
Loading	Axial 15 N, Radial 15 N
Protection	IP 65
Temperature	-20°...+70° C (-4°...+158° F) +100° C (+212° F) Optional
Weight	130 g (0.29 lb)

OUTPUT SIGNALS



A leads B in the Clockwise Direction (facing shaft set screw side)
Complementary Signals are also available





ORDERING CODE

IH	490	-							-					
a	b		c	d	e	f	g	h		Pulses Per Revolution				

a	Group Function	e	Connection Type
IH	Incremental Hollow Shaft	0=6' (2Mtr) Cable	
b	Basic Series Number	f	Connection Location
490		R=Radial	
c	Shaft Size	g	Output Signals
AA=1/4". 06=06 mm, 08=08 mm		3=A+B+Z	
d	Mechanical Options	6=A+B+Z+Complementary	
0=None		h	Output Circuit Type
		3=Push-Pull 4.75 to 30 Vdc	

Notes:
Special functions and designs will be designated by a 4 digit code at the end of the part number. Consult factory for further details
Resolution over 5000 PPR uses interpolation circuitry
Please specify supply voltage 5Vdc or 8 to 30Vdc

CONNECTIONS

Function	Cable Colour Code
0 Volt	white
+ Volt	brown
A	green
B	yellow
Z	grey
Ā	pink
B̄	blue
Z̄	red